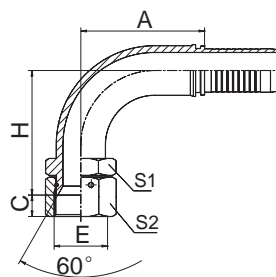


KF29691



KF29691-W

90° 日本英管内螺纹 60° 内锥面  
90° JIS GAS FEMALE 60° CONE SEAT  
JIS B8363

代号 PART NO.	螺纹 E THREAD E	胶管 HOSE BORE		尺寸 DIMENSIONS					
		公称内径 DN	标号 DASH	A	C	H	S1	S2	
KF29691-04-04	G1/4"X19	6	04	30	8	38	19	19	
KF29691-04-05	G1/4"X19	8	05	34	8	41	19	19	
KF29691-06-06	G3/8"X19	10	06	35.6	9	45.8	22	22	
KF29691-08-08	G1/2"X14	12	08	41	12	53	27	27	
KF29691-10-10	G5/8"X14	16	10	56.5	11.5	61	30	30	
KF29691-12-12	G3/4"X14	20	12	65.5	13.5	69	32	32	
KF29691-16-16	G1"X11	25	16	76.7	16	76.5	41	41	
KF29691-20-20W	G1.1/4"X11	32	20	91.5	18.5	92.5	50	50	
KF29691-24-24W	G1.1/2"X11	40	24	109.4	19	110.5	55	55	
KF29691-32-32W	G2"X11	50	32	131.8	23	133.8	70	70	

注：1. 表中代号用于编织软管。 2. 如需用于缠绕软管代号改为 29692-xx-xx。  
Note: 1.For use with braided hoses. 2.If use with spiral hoses, hose fitting series number is 29692-xx-xx.