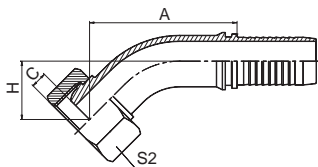
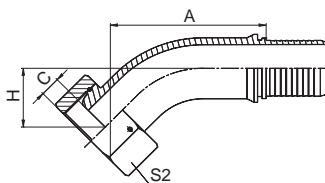


KF22141



KF22141-T



KF22141-W

45° 英管内螺纹球面
45° BSP FEMALE MULTISEAL

代号 PART NO.	螺纹 E THREAD E	胶管 HOSE BORE		尺寸 DIMENSIONS			
		公称内径 DN	标号 DASH	A	C	H	S2
KF22141-02-04	G1/8"X28	6	04	43.7	2	21.6	14
KF22141-04-03	G1/4"X19	5	03	41.3	4	20.4	19
KF22141-04-04	G1/4"X19	6	04	43.7	4	21.6	19
KF22141-06-05	G3/8"X19	8	05	46.2	5	22.9	22
KF22141-06-06	G3/8"X19	10	06	48.1	5	23.9	22
KF22141-06-08	G3/8"X19	12	08	60.4	5	25.4	22
KF22141-08-04T	G1/2"X14	6	04	43.9	6	23.8	27
KF22141-08-06T	G1/2"X14	10	06	42.5	6	18.2	27
KF22141-08-08	G1/2"X14	12	08	61.8	6	26.8	27
KF22141-08-10	G1/2"X14	16	10	73	6	29	27
KF22141-10-10	G5/8"X14	16	10	73.7	8	28.9	30
KF22141-10-12	G5/8"X14	20	12	79.8	8	32.5	30
KF22141-12-08T	G3/4"X14	12	08	63.2	9.5	28.3	32
KF22141-12-10	G3/4"X14	16	10	70.4	9.5	29.6	32
KF22141-12-12	G3/4"X14	20	12	80.6	9.5	33.2	32
KF22141-16-12	G1"X11	20	12	81.6	11	33.5	41
KF22141-16-14	G1"X11	22	14	83.3	11	33	41
KF22141-16-16	G1"X11	25	16	89.2	11	35	41
KF22141-20-16T	G1.1/4"X11	25	16	91.4	9.1	37.1	50
KF22141-20-20W	G1.1/4"X11	32	20	102.9	10	41.2	50
KF22141-24-24W	G1.1/2"X11	40	24	119.8	11.5	49	55
KF22141-32-32W	G2"X11	50	32	137.4	15	53	70

注：1. 表中代号用于编织软管。

2. 如需用于缠绕软管代号改为 22142-xx-xx。

Note: 1. For use with braided hoses. 2. If use with spiral hoses, hose fitting series number is 22142-xx-xx.