

SAE 法兰系列 / SAE-flange Series

AFMW 卡套连接式整体 SAE 直角弯头法兰 / AFMW Elbow SAE Flanges with Bite-type Fitting End

AFMW 卡套连接式整体 SAE 直角弯头法兰

AFMW Elbow SAE Flanges with Bite-type Fitting End

订货代号示例:

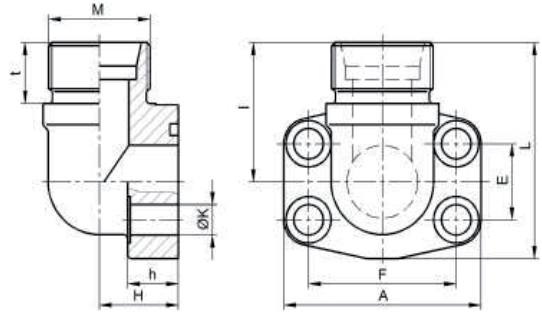
带 L28 规格卡套接头端, 通径 DN25 (1"),
3000 psi 系列碳钢制 AFMW 卡套连接式
整体 SAE 直角弯头法兰,
其订货代号应为

AFMW 3003 / L28 / ST

Ordering Example:

For DN25 (1"), 3000 psi, carbon steel made
AFMW elbow SAE flanges,
with a L28 bite-type fitting end, the ordering code should be:

AFMW 3003 / L28 / ST



mm

| 公称规格 Nominal Size | | 最高工作压力 Max. Pressure | 型式代号 Type Code | 尺寸 Dimensions | | | | | | | | | | 配用螺栓 Screws | O型密封圈 O-Ring | 重量 Weight |
|----------------------|--------|-------------------------|-------------------|------------------|-----|------|------|-----|----|----|----|----|----------|----------------|-----------------|--------------|
| mm | in. | bar | | M | A | E | F | L | I | H | h | K | | | kg | |
| 3000 psi | | | | | | | | | | | | | | | | |
| 13 | 1/2" | 315 | AFM 3001 / L15 | M22x1.5 | 57 | 17.5 | 38.1 | 44 | 35 | 35 | 16 | 9 | M8 x 30 | 18.7 x 3.55 | 0.370 | |
| | | 350 | AFM 3001 / S16 | M24x1.5 | | | | | | | | | | | | |
| 19 | 3/4" | 315 | AFM 3002 / L18 | M26x1.5 | 66 | 22.3 | 47.6 | 49 | 38 | 38 | 18 | 11 | M10 x 35 | 25.0 x 3.55 | 0.518 | |
| | | 160 | AFM 3002 / L22 | M30x2.0 | | | | | | | | | | | | |
| | | 350 | AFM 3002 / S20 | M30x2.0 | | | | | | | | | | | | |
| 25 | 1" | 350 | AFM 3002 / S25 | M36x2.0 | 70 | 26.2 | 52.4 | 69 | 42 | 42 | 19 | 11 | M10 x 40 | 32.9 x 3.55 | 0.757 | |
| | | 160 | AFM 3003 / L28 | M36x2.0 | | | | | | | | | | | | |
| | | 350 | AFM 3003 / S30 | M42x2.0 | | | | | | | | | | | | |
| 32 | 1 1/4" | 160 | AFM 3004 / L35 | M45x2.0 | 80 | 30.2 | 58.7 | 85 | 48 | 48 | 22 | 11 | M10 x 40 | 37.7 x 3.55 | 1.110 | |
| | | 280 | AFM 3004 / S25 | M36x2.0 | | | | | | | | | | | | |
| | | 280 | AFM 3004 / S30 | M42x2.0 | | | | | | | | | | | | |
| 38 | 1 1/2" | 160 | AFM 3004 / S38 | M52x2.0 | 194 | 35.7 | 69.9 | 94 | 54 | 54 | 25 | 13 | M12 x 45 | 47.2 x 3.55 | 1.633 | |
| | | 210 | AFM 3005 / S38 | M52x2.0 | | | | | | | | | | | | |
| 6000 psi | | | | | | | | | | | | | | | | |
| 13 | 1/2" | 350 | AFM 6001 / S16 | M24x1.5 | 57 | 18.2 | 40.5 | 60 | 37 | 37 | 16 | 9 | M8 x 30 | 18.7 x 3.55 | 0.362 | |
| | | 280 | AFM 6002 / S16 | M24x1.5 | | | | | | | | | | | | |
| 19 | 3/4" | 350 | AFM 6002 / S20 | M30x2.0 | 71 | 23.8 | 50.8 | 69 | 41 | 41 | 19 | 11 | M10 x 35 | 25.0 x 3.55 | 1.250 | |
| | | 350 | AFM 6002 / S25 | M36x2.0 | | | | | | | | | | | | |
| 25 | 1" | 350 | AFM 6003 / S25 | M36x2.0 | 80 | 27.8 | 57.2 | 84 | 48 | 48 | 24 | 13 | M12 x 45 | 32.9 x 3.55 | 1.219 | |
| | | 350 | AFM 6003 / S30 | M42x2.0 | | | | | | | | | | | | |
| 32 | 1 1/4" | 350 | AFM 6004 / S30 | M42x2.0 | 95 | 31.8 | 66.6 | 95 | 55 | 55 | 25 | 15 | M14 x 45 | 37.7 x 3.55 | 1.680 | |
| | | 315 | AFM 6004 / S38 | M52x2.0 | | | | | | | | | | | | |
| 38 | 1 1/2" | 315 | AFM 6004 / S38 | M52x2.0 | 113 | 36.5 | 79.3 | 110 | 61 | 61 | 26 | 17 | M16 x 45 | 47.2 x 3.55 | 2.653 | |