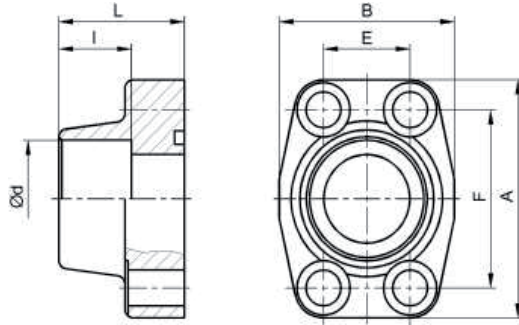


SAE 法兰系列 / SAE-flange Series

AFLA 带止口 SAE 焊接法兰 / AFLA SAE Socket Weld Flanges

AFLA 带止口 SAE 焊接法兰

AFLA SAE Socket Weld Flanges



订货代号示例:

通径 DN25 (1"), 3000 psi 系列碳钢制 AFLA 带止口 SAE 焊接法兰, 其订货代号为

AFLA 3003 / ST

Ordering Example:

The ordering code for DN25 (1"), 3000 psi, carbon steel made AFLA SAE socket weld flanges should be:

AFLA 3003 / ST

公称规格 Nominal Size		型式代号 Type Code	最高工作压力 Max. Pressure	尺寸 Dimensions							螺栓规格 Screws	重量 Weight
mm	in.		bar	d	A	B	E	F	L	I	M	kg
3000 psi												
10	3/8"	AFLA 3001a	210	17.5	57	47	17.5	38.1	36	18	M8	0.175
13	1/2"	AFLA 3001	210	21.6	57	47	17.5	38.1	36	18	M8	0.151
19	3/4"	AFLA 3002	210	27.2	66	49	22.3	47.6	36	18	M10	0.245
25	1"	AFLA 3003	210	34.5	70	53	26.2	52.4	38	18	M10	0.272
32	1 1/4"	AFLA 3004	210	42.8	80	69	30.2	58.7	41	20	M10	0.385
38	1 1/2"	AFLA 3005	200	48.6	94	77	35.7	69.9	44	22	M12	0.583
51	2"	AFLA 3006	200	61.0	103	89	42.9	77.8	45	24	M12	0.630
64	2 1/2"	AFLA 3007	160	76.6	115	101	50.8	88.9	50	28	M12	0.787
76	3"	AFLA 3008	100	90.5	135	124	61.9	106.4	50	28	M16	1.222
89	3 1/2"	AFLA 3009	35	103.0	153	137	69.9	120.7	50	28	M16	1.332
102	4"	AFLA 3010	35	115.0	163	147	77.8	130.2	50	28	M16	1.425
127	5"	AFLA 3011	35	141.0	184	170	92.1	152.4	50	28	M16	1.782
6000 psi												
10	3/8"	AFLA 6001a	410	17.5	57	47	18.2	40.5	36	18	M8	0.159
16	1/2"	AFLA 6001	410	21.6	57	47	18.2	40.5	36	18	M8	0.158
19	3/4"	AFLA 6002	410	27.2	71	53	23.8	50.8	36	20	M10	0.288
25	1"	AFLA 6003	410	34.5	80	66	27.8	57.2	44	22	M12	0.458
32	1 1/4"	AFLA 6004	410	42.8	94	77	31.8	66.6	44	22	M14	0.636
38	1 1/2"	AFLA 6005	410	48.6	103	89	36.5	79.3	51	24	M16	0.925
51	2"	AFLA 6006	410	61.0	135	116	44.5	96.8	58	25	M20	1.738