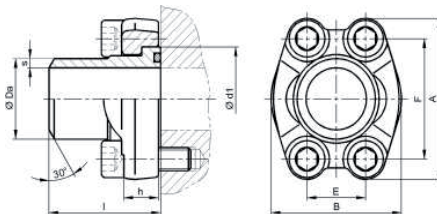


SAE 法兰系列 / SAE-flange Series

AFSA 单端焊接式 SAE 整体法兰组件 / AFSA Single-end Welded SAE Unitary Flange Kit

安装尺寸 粗体所示接管规格为优先选用规格
 Dimensions Connecting head sizes shown in bold are prefe- rental
 **) 因法兰颈部尺寸的限制, 3007 规格接管
 外径 Da 实际为 Ø73.9
 Because of the limit of the inner diameter of the flanges, the real dimension of Da for 64-3 connecting head is Ø73.9.



公称规格 Nominal Size	最高工作压力 Max. Pressure	型式代号 Type Code	尺寸 Dimensions							O 型密封圈 O-Ring	螺栓规格 Belts	重量 Weight		
			A	B	E	F	d1	h	I					
mm	in.	bar											M	kg
3000 psi ISO 6162-1 / SAE J518C-61														
13	1/2"	350	AFSA 3001	54.1 20x3	46.0 /21.3x2.9/22x2	17.5	38.1	30.1	13	36	18.7 x 3.55	M8 x 30	0.24	
19	3/4"	350	AFSA 3002	65.6 25x3	52.0 /26.9x3.6	22.3	47.6	38.1	14	36	25.0 x 3.55	M10 x 30	0.4	
25	1"	350	AFSA 3003	70.4 30x4	59.5 /33.7x3.2/35x4	26.2	52.4	44.4	14	38	32.9 x 3.55	M10 x 35	0.5	
32	1 1/4"	250	AFSA 3004	78.7 42.4x3.2	73.0 /30.4x4/42.4x5	30.2	58.7	50.8	16	41	37.7 x 3.55	M10 x 40	0.75	
38	1 1/2"	200	AFSA 3005	93.9 48.3x3.2	83.0 /42.4x3.2/38x4.0	35.7	69.9	60.3	16	45	47.2 x 3.55	M12 x 45	1.05	
51	2"	200	AFSA 3006	101.8 60.3x5.6	97.0 /42.4x3.2/42x3.0	42.9	77.8	71	16	45	56.7 x 3.55	M12 x 45	1.44	
64	2 1/2"	160	AFSA 3007**	114.9 76.1x3.6	109.0 /76.1x7.1	50.8	88.9	84.1	19	50	69.4 x 3.55	M12 x 45	1.84	
76	3"	100	AFSA 3008	134.4 88.9x3.6	131.0 /76.1x3.6/76.1x7.1	61.9	106.4	101.6	21	50	85.3 x 3.55	M16 x 50	2.88	
89	3 1/2"	35	AFSA 3009	152.7 88.9x3.6	140.0 /76.1x3.6/114.3x3.6	69.9	120.7	114.3	22	50	98.0 x 3.55	M16 x 50	3.73	
102	4"	35	AFSA 3010	162.2 114x3.6	152.0 /88.9x3.6/76.1x3.6	77.8	130.2	127.0	24	50	110.7 x 3.55	M16 x 50	4.28	
127	5"	35	AFSA 3011	184.4 139.7x4	181.0	92.1	152.4	152.4	30	50	136.1 x 3.55	M16 x 65	4.86	
6000 psi ISO 6162-2 / SAE J518C-62														
13	1/2"	420	AFSA 6001	56.5 16x2.5 / 20x3	48.0 / 21.3x4.5	18.2	40.5	31.7	16	36	18.7 x 3.55	M8 x 30	0.35	
19	3/4"	420	AFSA 6002	70.8 25.5x4	60.0 / 20x3 / 26.9x5.6	23.8	50.8	41.3	19	36	25.0 x 3.55	M10 x 40	0.65	
25	1"	420	AFSA 6003	81.2 30x4	70.0 / 25x4 / 33.7x7 / 7.1	27.8	57.2	47.6	24	45	32.9 x 3.55	M12 x 45	1.08	
32	1 1/4"	420	AFSA 6004	94.6 38x5 / 42.4x8.8	78.0 / 30x4	31.8	66.6	54	27	45	37.7 x 3.55	M14 x 50	1.59	
38	1 1/2"	350	AFSA 6005	113.3 48.3x8.8 /	95.0 / 38x5 / 48.3x7.1	36.5	79.3	63.5	30	55	47.2 x 3.55	M16 x 55	2.47	
51	2"	350	AFSA 6006	132.8 60.3x10	114.0 / 60.3x8 / 60.3x8.8	44.5	96.8	79.4	37	65	56.7 x 3.55	M20 x 65	4.2	
64	2 1/2"	350	AFSA 6007	180.0 76.1x12.5	150.2 / 76.1x10 / 88.9x14.2	58.8	123.8	108.9	45	80	69.4 x 3.55	M24 x 130		
76	3"	350	AFSA 6008	215.0 88.9x14.2	198.2 / 114.3x11 / 114.3x17.5	71.6	152.4	132.5	55	80	85.3 x 3.55	M30 x 150		