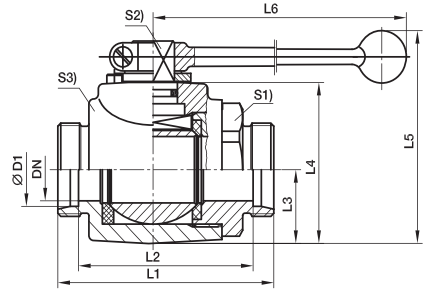
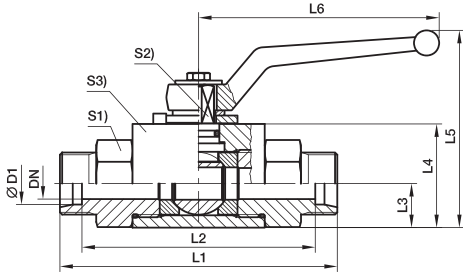
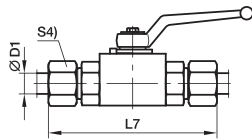


KFKH 二通碳钢球阀

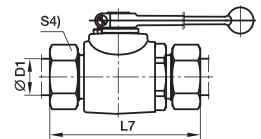
EO 24°锥/EO 24°锥



DN 4-25



DN 32-40



系列	ØD1	DN	L1	L2	L3	L4	L5	L6	L7	S1	S2	S3	S4	重量 克/件	订货号	工作压力 (bar)	
L	06	4	37	53	10.0	25	55.0	76	82	19	7	20	14	195	KFKH06LX	500	
	08	6	67	53	10.0	25	55.0	76	82	19	7	20	17	190	KFKH08LX	500	
	10	8	75	61	14.5	35	68.0	100	90	24	8	30	19	420	KFKH10LX	500	
	12	10	75	61	14.5	35	68.0	100	90	24	8	30	22	410	KFKH12LX	500	
	15	12	83	69	17.0	40	92.0	112	99	30	10	35	27	631	KFKH15LX	500	
	18	16	82	67	20.0	45	105.0	166	99	36	11	45	32	850	KFKH18LX	400	
	22	20	99	84	24.0	55	113.0	187	116	41	14	45	36	1210	KFKH22LX	400	
	28	25	108	93	26.0	60	118.0	187	126	50	14	55	41	1750	KFKH28LX	400	
	35	25	116	95	26.0	60	118.0	187	138	50	14	55	50	1820	KFKH35LXDN25	400	
	35	32	121	100	36.5	80	180.5	320	143	60	17	73	50	3158	KFKH35LX	315	
	42	25	121	99	26.0	60	118.0	187	144	55	14	55	60	1940	KFKH42LXDN25	400	
	42	40	118	96	42.5	90	190.5	320	141	70	19	85	60	3788	KFKH42LX	315	
	S	08	4	73	59	10.0	25	55.0	76	88	19	7	20	19	214	KFKH08SX	500
		10	6	73	58	10.0	25	55.0	76	90	19	7	20	22	220	KFKH10SX	500
		12	8	77	62	14.5	35	68.0	100	94	24	8	30	24	430	KFKH12SX	500
		14	10	81	65	14.5	35	68.0	100	100	24	8	30	27	440	KFKH14SX	500
16		12	87	70	17.0	40	92.0	112	106	30	10	35	30	649	KFKH16SX	500	
20		16	90	69	20.0	45	105.0	166	112	36	11	45	36	900	KFKH20SX	400	
25		20	107	83	24.0	55	113.0	187	131	41	14	45	46	1290	KFKH25SX	400	
30		25	120	93	26.0	60	118.0	187	146	50	14	55	50	1880	KFKH30SX	400	
38		25	134	102	26.0	60	118.0	187	163	55	14	55	60	1950	KFKH38SXDN25	400	
38		32	127	95	36.5	80	180.5	320	156	60	17	73	60	3266	KFKH38SX	315	