

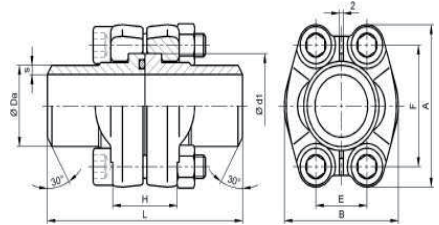
SAE 法兰系列 / SAE-flange Series

DSFS 双头焊接式 SAE 法兰连接组件 / DSFS Double-end Welded SAE Flange Connector Kit

安装尺寸
Dimensions

*) 粗体所示接管规格为优先选用规格
Connecting head sizes shown in bold are pre-ferential

**) 因法兰颈部尺寸的限制, 3007 接管外径 Da 实际为 Ø73.9
Because of the limit of the inner diameter of the flanges, the real dimension of Da for 3007 connecting head is Ø73.9.



公称规格 Nominal Size	最高工作压力 Max. Pressure	型式代号 Type Code	尺寸 Dimensions							O 型密封圈 O-Ring	螺栓规格 Belts	重量 Weight	
			A	B	E	F	d1	H	L				
3000 psi ISO 6162-1 / SAE J518C-61													
13	1/2"	350	DSFS 3001	54.1 Da x s 20x3	46.0 721.3x2.9/22x2	17.5	38.1	30.1	26	72	18.7 x 3.55	M8 x 40	0.46
19	3/4"	350	DSFS 3002	65.6 Da x s 25x3	52.0 726.9x3.6	22.3	47.6	38.1	28	72	25.0 x 3.55	M10 x 45	0.78
25	1"	350	DSFS 3003	70.4 Da x s 30x4	59.5 /33.7x3.2/35x4	26.2	52.4	44.4	28	76	32.9 x 3.55	M10 x 50	0.98
32	1 1/4"	250	DSFS 3004	78.7 Da x s 42.4x3.2	73.0 /30.4x4/38.3x3/38.4x4x38.5x5/ 42.4x5	30.2	58.7	50.8	32	82	37.7 x 3.55	M10 x 50	1.45
38	1 1/2"	200	DSFS 3005	93.9 Da x s 48.3x3.2	83.0 /48.3x4.5/42.4x3.2/48.3x2.6/ 48.3x3.6/48.3x4/48.3x5/48.3x6.3	35.7	69.9	60.3	32	90	47.2 x 3.55	M12 x 50	2.05
51	2"	200	DSFS 3006	101.8 Da x s 60.3x2.9	97.0 /60.3x3.9/60.3x5.6 60.3x5/60.3x6.3	42.9	77.8	71.0	32	90	56.7 x 3.55	M12 x 50	2.84
64	2 1/2"	160	DSFS 3007**	114.9 Da x s 76.1x2.9	109.0 /76.1x3.6 76.1x4/76.1x7.1	50.8	88.9	84.1	38	100	69.4 x 3.55	M12 x 55	3.61
76	3"	100	DSFS 3008	134.4 Da x s 88.9x3.6	131.0 /76.1x3.6/76.1x7.1/88.9x3.2	61.9	106.4	101.6	42	100	85.3 x 3.55	M16 x 65	5.7
89	3 1/2"	35	DSFS 3009	152.7 Da x s 88.9x3.6	140.0 /100x6/88.9x8/114.3x3.6	69.9	120.7	114.3	44	100	98.0 x 3.55	M16 x 70	7.35
102	4"	35	DSFS 3010	162.2 Da x s 114x3.6	152.0 /88.9x3.6/110x6/114.3x6	77.8	130.2	127.0	48	100	110.7 x 3.55	M16 x 75	8.48
127	5"	35	DSFS 3011	184.4 Da x s 139.7x4	181.0 /127x4/133x4/139.7x10	92.1	152.4	152.4	60	100	136.1 x 3.55	M16 x 85	9.62
6000 psi ISO 6162-2 / SAE J518C-62													
13	1/2"	420	DSFS 6001	56.5 Da x s 16x2.5	48.0 /20x3 /21.3x3.5/21.3x4.5	18.2	40.5	31.7	32	72	18.7 x 3.55	M8 x 45	0.67
19	3/4"	420	DSFS 6002	70.8 Da x s 25.5x4	60.0 /20x3/26.9x5.6	23.8	50.8	41.3	38	72	25.0 x 3.55	M10 x 55	1.25
25	1"	420	DSFS 6003	81.2 Da x s 30x5	70.0 /25x4/30x4/33.7x7.1/38x6	27.8	57.2	47.6	48	90	32.9 x 3.55	M12 x 65	2.08
32	1 1/4"	420	DSFS 6004	94.6 Da x s 38x5	78.0 /38x6/42.4x8.8 /42.4x2.6/42.4x6.3	31.8	66.6	54.0	54	90	37.7 x 3.55	M14 x 75	3.10
38	1 1/2"	350	DSFS 6005	113.3 Da x s 38x6	95.0 /48.3x8/48.3x8.8 /38x5/48.3x6.3/ 48.3x7.1	36.5	79.3	63.5	60	110	47.2 x 3.55	M16 x 85	4.85
51	2"	350	DSFS 6006	132.8 Da x s 60.3x10	114.0 /48.3x8/60.3x8/60.3x8.8	44.5	96.8	79.4	74	130	56.7 x 3.55	M20 x 100	8.28
64	2 1/2"	350	DSFS 6007	180.0 Da x s 76.1x12.5	150.2 /76.1x8/76.1x10/88.9x14.2	58.8	123.8	108.9	90	160	69.4 x 3.55	M24 x 130	16.5
76	3"	350	DSFS 6008	215.0 Da x s 88.9x14.2	198.2 /88.9x11/114.3x11/114.3x17.5	71.6	152.4	132.5	110	160	85.3 x 3.55	M30 x 150	32.8