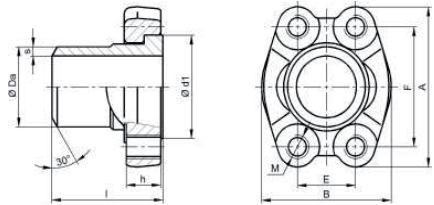


SAE 法兰系列 / SAE-flange Series

AFS 单端焊接式带螺孔 SAE 法兰组件 / AFS Single-end Welded SAE Tapped Flange Kit

安装尺寸 Dimensions *) 粗体所示接管规格为优先选用规格
 Connecting head sizes shown in bold are prefe- rental
 **) 因法兰颈部尺寸的限制, 3007 规格接管
 外径 Da 实际为 Ø73.9
 Because of the limit of the inner diameter of the flanges, the real dimension of Da for 64-3 con- necting head is Ø73.9.



公称规格 Nominal Size	最高工作压力 Max. Pressure	型式代号 Type Code	尺寸 Dimensions								O 型密封圈 O-Ring	螺栓规格 Belts	重量 Weight
			A	B	E	F	d1	h	I	M			
3000 psi ISO 6162-1 / SAE J518C-61													
13	1/2"	350	AFS 3001	54.1	46.0	17.5	38.1	30.1	13	36		M8	0.22
			Da x s	20x3	/21.3x2.9/22x2								
19	3/4"	350	AFS 3002	65.6	52.0	22.3	47.6	38.1	14	36		M10	0.38
			Da x s	25x3	/26.9x3.6								
25	1"	350	AFS 3003	70.4	59.5	26.2	52.4	44.4	14	38		M10	0.48
			Da x s	30x4	/33.7x3.2/35x4								
32	1 1/4"	250	AFS 3004	78.7	73.0	30.2	58.7	50.8	16	41		M10	0.7
			Da x s	42.4x3.2	/30.4x4/42.4x5								
38	1 1/2"	200	AFS 3005	93.9	83.0	35.7	69.9	60.3	16	45		M12	1
			Da x s	48.3x3.2	/42.4x3.2/38x4.0								
51	2"	200	AFS 3006	101.8	97.0	42.9	77.8	71	16	45		M12	1.4
			Da x s	60.3x5.6	/42.4x3.2/42x3.0								
64	2 1/2"	160	AFS 3007**	114.9	109.0	50.8	88.9	84.1	19	50		M12	1.77
			Da x s	76.1x3.6	/76.1x7.1								
76	3"	100	AFS 3008	134.4	131.0	61.9	106.4	101.6	21	50		M16	2.82
			Da x s	88.9x3.6	/76.1x3.6/76.1x7.1								
89	3 1/2"	35	AFS 3009	152.7	140.0	69.9	120.7	114.3	22	50		M16	3.63
			Da x s	88.9x3.6	/76.1x3.6/114.3x3.6								
102	4"	35	AFS 3010	162.2	152	77.8	130.2	127	24	50		M16	4.2
			Da x s	114x3.6	/88.9x3.6/76.1x3.6								
127	5"	35	AFS 3011	184.4	181	92.1	152.4	152.4	30	50		M16	4.76
			Da x s	139.7x4									
6000 psi ISO 6162-2 / SAE J518C-62													
13	1/2"	420	AFS 6001	56.5	48.0	18.2	40.5	31.7	16	36		M8	0.32
			Da x s	16x2.5 / 20x3	/21.3x4.5								
19	3/4"	420	AFS 6002	70.8	60.0	23.8	50.8	41.3	19	36		M10	0.60
			Da x s	25.5x4	/20x3 / 26.9x5.6								
25	1"	420	AFS 6003	81.2	70.0	27.8	57.2	47.6	24	45		M12	1.00
			Da x s	30x4	/25x4 / 33.7x7 / 7.1								
32	1 1/4"	420	AFS 6004	94.6	78.0	31.8	66.6	54	27	45		M14	1.51
			Da x s	38x5 / 42.4x8.8	/30x4								
38	1 1/2"	350	AFS 6005	113.3	95.0	36.5	79.3	63.5	30	55		M16	2.38
			Da x s	48.3x8.8 /	/38x5 / 48.3x7.1								
51	2"	350	AFS 6006	132.8	114.0	44.5	96.8	79.4	37	65		M20	4.08
			Da x s	60.3x10	/60.3x8 / 60.3x8.8								
64	2 1/2"	350	AFS 6007	180.0	150.2	58.8	123.8	108.9	45	80		M24	
			Da x s	76.1x12.5	/76.1x10 / 88.9x14.2								
76	3"	350	AFS 6008	215.0	198.2	71.6	152.4	132.5	55	80		M30	
			Da x s	88.9x14.2	/114.3x11 / 114.3x17.5								