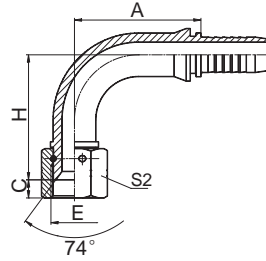


KF26791



KF26791W

90° 美制 JIC 内螺纹 74° 内锥面
 90° JIC FEMALE 74° CONE SEAT
 SAE J514

代号 PART NO.	螺 纹 E THREAD E	胶 管 HOSE BORE		尺 寸 DIMENSIONS			
		公称内径 DN	标号 DASH	A	C	H	S2
KF26791-04-03	7/16"X20	5	03	26.5	9	30.5	15
KF26791-04-04	7/16"X20	6	04	30	9	33.5	15
KF26791-05-04	1/2"X20	6	04	30	9.5	34	17
KF26791-05-05	1/2"X20	8	05	33	9.5	37	17
KF26791-05-06	1/2"X20	10	06	35.3	9.5	39.3	17
KF26791-06-04	9/16"X18	6	04	30	10.5	34	19
KF26791-06-05	9/16"X18	8	05	33	10.5	37	19
KF26791-06-06	9/16"X18	10	06	35.3	10.5	39.3	19
KF26791-06-08	9/16"X18	12	08	35.8	10.5	39.8	19
KF26791-08-06	3/4"X16	10	06	35.3	11	41.3	24
KF26791-08-08	3/4"X16	12	08	41	11	47.5	24
KF26791-08-10	3/4"X16	16	10	49	11	47.5	24
KF26791-10-08	7/8"X14	12	08	41	13	48	27
KF26791-10-10	7/8"X14	16	10	56	13	52.5	27
KF26791-10-12	7/8"X14	20	12	64.9	13	62	27
KF26791-12-08	1.1/16"X12	12	08	41	15	49.5	32
KF26791-12-10	1.1/16"X12	16	10	56	15	54	32
KF26791-12-12	1.1/16"X12	20	12	65.5	15	63.5	32
KF26791-12-16	1.1/16"X12	25	16	74	15	63.5	32
KF26791-14-12	1.3/16"X12	20	12	65.5	15	63.5	36
KF26791-16-12	1.5/16"X12	20	12	65.5	16	63.5	41
KF26791-16-16	1.5/16"X12	25	16	76.7	16	70	41
KF26791-20-20W	1.5/8"X12	32	20	91.5	17	80.5	50
KF26791-24-20W	1.7/8"X12	32	20	91.5	20	80.5	55
KF26791-24-24W	1.7/8"X12	40	24	109.4	20	94	55
KF26791-32-32W	2.1/2"X12	50	32	133.1	23.5	121.8	75

注：1. 表中代号用于编织软管。 2. 如需用于缠绕软管代号改为 26792-xx-xx。
 Note: 1.For use with braided hoses. 2.If use with spiral hoses, hose fitting series number is 26792-xx-xx.