

## SAE 法兰系列 / SAE-flange Series

### SFS 单端焊接式 SAE 法兰组件 / SFS Unilateral Welded SAE Flange Kit

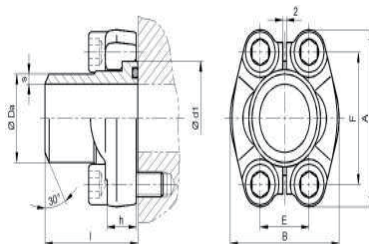
安装尺寸

Dimensions

\*) 粗体所示接管规格为优先选用规格

Connecting head sizes shown in bold are preferential

\*\*) 因法兰颈尺寸限制, 3007 接管外径 Da 实际为  $\varnothing 73.9$  Because of the limit of the inner diameter of the flanges, the real dimension of Da for 3007 connecting head is  $\varnothing 73.9$ .



公称规格 Nominal Size	最高工作压力 Max. Pressure	型式代号 Type Code	尺寸 Dimensions							O型密封圈 O-Ring	螺栓规格 Belts	重量 Weight	
			A	B	E	F	d1	h	I				
<b>3000 psi ISO 6162-1 / SAE J518C-61</b>													
13	1/2"	350	SFS 3001	54.1 <b>20×3</b>	46.0 /21.3×2.9/22×2	17.5	38.1	30.1	13	30	18.7 x 3.55	M8 x 30	0.24
19	3/4"	350	SFS 3002	65.6 <b>25×3</b>	52.0 /26.9×3.6	22.3	47.6	38.1	14	35	25.0 x 3.55	M10 x 30	0.41
25	1"	350	SFS 3003	70.4 <b>30×4</b>	59.5 /33.7×3.2/35×4	26.2	52.4	44.4	14	40	32.9 x 3.55	M10 x 30	0.5
32	1 1/4"	250	SFS 3004	78.7 <b>42.4×3.2</b>	73.0 /30.4×4/38.3×3/38.4×4×38.5×5/ 42.5×5	30.2	58.7	50.8	16	45	37.7 x 3.55	M10 x 30	0.75
38	1 1/2"	200	SFS 3005	93.9 <b>48.3×3.2</b>	83.0 /48.3×4.5/42.4×3.2/48.3×2.6/ 48.3×3.6/48.3×4/48.3×5/48.3×6.3	35.7	69.9	60.3	16	50	47.2 x 3.55	M12 x 35	1.05
51	2"	200	SFS 3006	101.8 <b>60.3×2.9</b>	97.0 /60.3×3.9/60.3×5.6/48.3×3.6/ 60.3×5/60.3×6.3	42.9	77.8	71	16	60	56.7 x 3.55	M12 x 35	1.44
64	2 1/2"	160	SFS 3007	114.9 <b>76.1×2.9/76.1×3.6</b>	109.0 /76.1×4/76.1×7.1	50.8	88.9	84.1	19	65	69.4 x 3.55	M12 x 40	1.90
76	3"	100	SFS 3008	134.4 <b>88.9×3.6</b>	131.0 /76.1×3.6/76.1×7.1/88.9×3.2	61.9	106.4	101.6	21	70	85.3 x 3.55	M16 X 45	3.00
89	3 1/2"	35	SFS 3009	152.7 <b>88.9×3.6</b>	140.0 /100×6/88.9×8/114.3×3.6	69.9	120.7	114.3	22	80	98.0 x 3.55	M16 X 50	3.60
102	4"	35	SFS 3010	162.2 <b>114×3.6</b>	152.0 /88.9×3.6/110×6/114.3×6	77.8	130.2	127	24	80	110.7 x 3.55	M16 X 50	4.26
127	5"	35	SFS 3011	184.4 <b>139.7×4</b>	181.0 /127×4/133×4/139.7×10	92.1	152.4	152.4	30	80	136.1 x 3.55	M16 x 50	4.86
<b>6000 psi ISO 6162-2 / SAE J518C-62</b>													
13	1/2"	420	SFS 6001	56.5 <b>16×2.5 / 20×3</b>	48.0 /21.3×3.5 / 21.3×4.5	18.2	40.5	31.7	16	40	18.7 x 3.55	M8 x 30	0.35
19	3/4"	420	SFS 6002	70.8 <b>25.5×4</b>	60.0 /20×3 / 26.9×5.6	23.8	50.8	41.3	19	45	25.0 x 3.55	M10 x 40	0.65
25	1"	420	SFS 6003	81.2 <b>30×5</b>	70.0 /25×4 / 30×4 / 33.7×7.1 / 38×6	27.8	57.2	47.6	24	50	32.9 x 3.55	M12 x 45	1.05
32	1 1/4"	420	SFS 6004	94.6 <b>38×5 / 38×6 / 42.4×8.8</b>	78.0 /42.4×2.6 / 42.4×6.3	31.8	66.6	54.0	27	55	37.7 x 3.55	M14 x 50	1.53
38	1 1/2"	350	SFS 6005	113.3 <b>38×6 / 48.3×8 / 48.3×8.8</b>	95.0 /38×5 / 48.3×6.3 / 48.3×7.1	36.5	79.3	63.5	30	60	47.2 x 3.55	M16 x 55	2.47
51	2"	350	SFS 6006	132.8 <b>60.3×10</b>	114.0 /48.3×8 / 60.3×8 / 60.3×8.8	44.5	96.8	79.4	37	70	56.7 x 3.55	M20 x 70	4.2
64	2 1/2"	350	SFS 6007	180.0 <b>76.1×12.5</b>	150.2 /76.1×8 / 76.1×10 / 88.9×14.2	58.8	123.8	108.9	45	80	69.4 x 3.55	M24 x 80	8.5
76	3"	350	SFS 6008	215.0 <b>88.9×14.2</b>	198.2 /88.9×11 / 114.3×11 / 114.3×17.5	71.6	152.4	132.5	55	100	85.3 x 3.55	M30 x 90	16.8