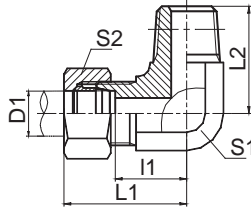


**KF1CN9**  
**KF1DN9**



**KF1CN9-RN**  
**KF1DN9-RN**

90° 弯布锥管外螺纹  
90° ELBOW NPT MALE

代号 PART NO.	螺纹 THREAD		管子外径 TUBE O.D.		尺寸 DIMENSIONS					压力等级 MPa
	E	F	D1		l1	L1	L2	S1	S2	
KF1CN9-12-02	M12X1.5	Z1/8"X27	6		13	28	21	11	14	25 轻系列 L
KF1CN9-12-04	M12X1.5	Z1/4"X18	6		15.5	30.5	25.5	14	14	
KF1CN9-14-04	M14X1.5	Z1/4"X18	8		15.5	30.5	25.5	14	17	
KF1CN9-16-06	M16X1.5	Z3/8"X18	10		17.5	32.5	29.5	16	19	
KF1CN9-18-04	M18X1.5	Z1/4"X18	12		19	34	28	19	22	
KF1CN9-18-06	M18X1.5	Z3/8"X18	12		19	34	31	19	22	
KF1CN9-18-08	M18X1.5	Z1/2"X14	12		21	36	36.7	22	22	
KF1CN9-22-06	M22X1.5	Z3/8"X18	15		22	37	32.5	22	27	
KF1CN9-22-08	M22X1.5	Z1/2"X14	15		22	37	36.7	22	27	
KF1CN9-26-08	M26X1.5	Z1/2"X14	18		25.5	42	40	27	32	
KF1CN9-26-12	M26X1.5	Z3/4"X14	18		25.5	42	44	27	32	
KF1CN9-30-12	M30X2	Z3/4"X14	22		29.3	45.8	45	30	36	
KF1CN9-30-16	M30X2	Z1"X11.5	22		32		50	33	36	
KF1CN9-36-16	M36X2	Z1"X11.5	28		33.3	49.8	51.5	36	41	
KF1CN9-45-20	M45X2	Z1.1/4"X11.5	35		39.2	60.7	63	48	50	
KF1CN9-52-24	M52X2	Z1.1/2"X11.5	42		44.8	67.8	65	55	60	
KF1DN9-14-04	M14X1.5	Z1/4"X18	6		17.5	32.5	25.5	14	17	
KF1DN9-16-04	M16X1.5	Z1/4"X18	8		18.5	33.7	26.5	16	19	
KF1DN9-18-06	M18X1.5	Z3/8"X18	10		19.5	36	31	19	22	
KF1DN9-20-04	M20X1.5	Z1/4"X18	12		19.5	36	28	19	24	
KF1DN9-20-06	M20X1.5	Z3/8"X18	12		19.5	36	31	19	24	
KF1DN9-22-06	M22X1.5	Z3/8"X18	14		23	41	32.5	22	27	
KF1DN9-22-08	M22X1.5	Z1/2"X14	14		23	41	36.7	22	27	
KF1DN9-24-06	M24X1.5	Z3/8"X18	16		24	42.5	33.5	24	30	
KF1DN9-24-08	M24X1.5	Z1/2"X14	16		24	42.5	37.5	24	30	
KF1DN9-30-08	M30X2	Z1/2"X14	20		28	49.8	41	30	36	
KF1DN9-30-12	M30X2	Z3/4"X14	20		28	49.8	45	30	36	
KF1DN9-36-12	M36X2	Z3/4"X14	25		32.8	56.8	49	36	46	
KF1DN9-36-16	M36X2	Z1"X11.5	25		32.8	56.8	51.5	36	46	
KF1DN9-42-16	M42X2	Z1"X11.5	30		36.2	62.7	54.5	41	50	
KF1DN9-42-20	M42X2	Z1.1/4"X11.5	30		36.2	62.7	54.5	41	50	
KF1DN9-52-20	M52X2	Z1.1/4"X11.5	38		45.8	76.8	65	55	60	
KF1DN9-52-24	M52X2	Z1.1/2"X11.5	38		45.8	76.8	65	55	60	

注：如需带卡套及卡套螺母整套订货，则请在代号后加“RN”，如1CN9-30-12RN。

Note: In case if you are interested to order the adapter in complete set with cutting ring and nut ,it is necessary to insert suffix "RN" after our part no., for example 1CN9-30-12RN.