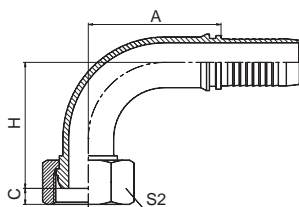
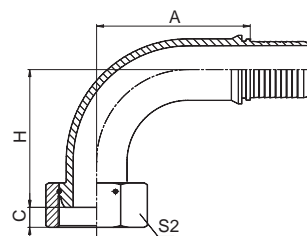


KF22191



KF22191-T



KF22191-W

90° 英管内螺纹球面
90° BSP FEMALE MULTISEAL

代号 PART NO.	螺纹 E THREAD E	胶管 HOSE BORE		尺寸 DIMENSIONS			
		公称内径 DN	标号 DASH	A	C	H	S2
KF22191-02-04	G1/8"X28	6	04	30	2	38	14
KF22191-04-03	G1/4"X19	5	03	27	4	35	19
KF22191-04-04	G1/4"X19	6	04	30	4	38	19
KF22191-04-05	G1/4"X19	8	05	33	4	41.5	19
KF22191-06-05	G3/8"X19	8	05	33	5	42	22
KF22191-06-06	G3/8"X19	10	06	35.3	5	44.3	22
KF22191-06-08	G3/8"X19	12	08	41	5	50	22
KF22191-08-06T	G1/2"X14	10	06	35.3	6	46.8	27
KF22191-08-08	G1/2"X14	12	08	41	6	52.5	27
KF22191-10-10	G5/8"X14	16	10	56.5	8	57.5	30
KF22191-10-12	G5/8"X14	20	12	65.5	8	67	30
KF22191-12-08T	G3/4"X14	12	08	41	9.5	52	32
KF22191-12-10	G3/4"X14	16	10	56.5	9.5	58.5	32
KF22191-12-12	G3/4"X14	20	12	65.5	9.5	68	32
KF22191-16-12T	G1"X11	20	12	66.2	11	68.5	41
KF22191-16-14	G1"X11	22	14	71.2	11	69.5	41
KF22191-16-16	G1"X11	25	16	76.7	11	75	41
KF22191-20-16T	G1.1/4"X11	25	16	76.7	10	78	50
KF22191-20-20W	G1.1/4"X11	32	20	92.3	10	85.3	50
KF22191-24-24W	G1.1/2"X11	40	24	109.4	11.5	108	55
KF22191-32-32W	G2"X11	50	32	133.1	15	123.8	70

注：1. 表中代号用于编织软管。 2. 如需用于缠绕软管代号改为 22192-xx-xx。
Note: 1. For use with braided hoses. 2. If use with spiral hoses, hose fitting series number is 22192-xx-xx.