

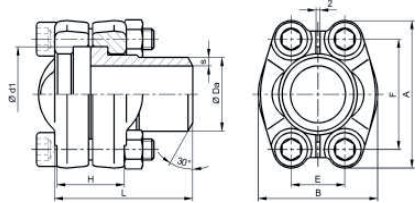
SAE 法兰系列 / SAE-flange Series

CSFS 单接管双头焊接式 SAE 法兰组件 / CSFS SAE Flange Kit with Single Welding Head

安装尺寸
Dimensions

*) 粗体所示接管规格为优先选用规格
Connecting head sizes shown in bold are prefe- rental

**) 因法兰颈部尺寸的限制, 3007 接管外径 Da 实际为Ø73.9
Because of the limit of the inner diameter of the flanges, the real dimension of Da for 3007 con- necting head is Ø73.9.



公称规格 Nominal Size		最高工作压力 Max. Pressure	型式代号 Type Code	尺寸 Dimensions						O 型密封圈 O-Ring	螺栓规格 Belts	重量 Weight	
mm	in.	bar		A	B	E	F	d1	H	L		M	kg
3000 psi ISO 6162-1 / SAE J518C-61													
13	1/2"	350	CSFS 3001	54.1 Da x s 20x3	46.0 721.3x2.9/22x2	17.5	38.1	30.1	26	45	18.7 x 3.55	M8 x 40	0.48
19	3/4"	350	CSFS 3002	65.6 Da x s 25x3	52.0 726.9x3.6	22.3	47.6	38.1	28	50	25.0 x 3.55	M10 x 45	0.81
25	1"	350	CSFS 3003	70.4 Da x s 30x4	59.5 /33.7x3.2/35x4	26.2	52.4	44.4	28	55	32.9 x 3.55	M10 x 50	1.03
32	1 1/4"	250	CSFS 3004	78.7 Da x s 42.4x3.2	73.0 /30.4x4/38.3x3/38.4x4x38.5x5/ 42.4x5	30.2	58.7	50.8	32	61	37.7 x 3.55	M10 x 50	1.52
38	1 1/2"	200	CSFS 3005	93.9 Da x s 48.3x3.2	83.0 /48.3x4.5/42.4x3.2/48.3x2.6/ 48.3x3.6/48.3x4/48.3x5/48.3x6.3	35.7	69.9	60.3	32	66	47.2 x 3.55	M12 x 50	2.15
51	2"	200	CSFS 3006	101.8 Da x s 60.3x2.9	97.0 /60.3x3.9/60.3x5.6 60.3x5/60.3x6.3	42.9	77.8	71.0	32	76	56.7 x 3.55	M12 x 50	2.96
64	2 1/2"	160	CSFS 3007**	114.9 Da x s 76.1x2.9	109.0 /76.1x3.6	50.8	88.9	84.1	38	85	69.4 x 3.55	M12 x 55	3.80
76	3"	100	CSFS 3008	134.4 Da x s 88.9x3.6	131.0 /76.1x3.6/76.1x7.1/88.9x3.2	61.9	106.4	101.6	42	91	85.3 x 3.55	M16 X 65	5.90
89	3 1/2"	35	CSFS 3009	152.7 Da x s 88.9x3.6	140.0 /100x6/88.9x8/114.3x3.6	69.9	120.7	114.3	44	102	98.0 x 3.55	M16 X 70	7.62
102	4"	35	CSFS 3010	162.2 Da x s 114x3.6	152.0 /88.9x3.6/110x6/114.3x6	77.8	130.2	127.0	48	104	110.7 x 3.55	M16 X 75	8.76
127	5"	35	CSFS 3011	184.4 Da x s 139.7x4	181.0 /127x4/133x4/139.7x10	92.1	152.4	152.4	60	110	136.1 x 3.55	M16 x 85	9.82
6000 psi ISO 6162-2 / SAE J518C-62													
13	1/2"	420	CSFS 6001	56.5 Da x s 16x2.5	48.0 /20x3	18.2	40.5	31.7	32	56	18.7 x 3.55	M8 x 45	0.50
19	3/4"	420	CSFS 6002	70.8 Da x s 25.5x4	60.0 /20x3/26.9x5.6	23.8	50.8	41.3	38	65	25.0 x 3.55	M10 x 55	1.05
25	1"	420	CSFS 6003	81.2 Da x s 30x5	70.0 /25x4/30x4/33.7x7.1/38x6	27.8	57.2	47.6	48	75	32.9 x 3.55	M12 x 65	1.90
32	1 1/4"	420	CSFS 6004	94.6 Da x s 38x5	78.0 /38x6/42.4x8.8	31.8	66.6	54.0	54	75	37.7 x 3.55	M14 x 75	2.90
38	1 1/2"	350	CSFS 6005	113.3 Da x s 38x6	95.0 /48.3x8/48.3x8.8	36.5	79.3	63.5	60	90	47.2 x 3.55	M16 x 85	4.65
51	2"	350	CSFS 6006	132.8 Da x s 60.3x10	114.0 /48.3x8/60.3x8/60.3x8.8	44.5	96.8	79.4	74	110	56.7 x 3.55	M20 x 100	7.65
64	2 1/2"	350	CSFS 6007	180.0 Da x s 76.1x12.5	150.2 /76.1x8/76.1x10/88.9x14.2	58.8	123.8	108.9	90	125	69.4 x 3.55	M24 x 130	16.35
76	3"	350	CSFS 6008	215.0 Da x s 88.9x14.2	198.2 /88.9x11/114.3x11/114.3x17.5	71.6	152.4	132.5	110	155	85.3 x 3.55	M30 x 150	26.50